

SS SA71 SP75
SW6 SA46 SP40
SW35 SA13 SP10
SMH

SYSTEMA

Systema Range

Max load:

SS- 8KG (17.6 lbs) SA71- 8KG (17.6 lbs) SA46- 12KG (26.45 lbs) SA13- 12KG (26.45 lbs)

Included Hardware:

All fasteners and hardware included.

Colours:

Silver or White

Warranty:

10 years limited

Index

Monitor Arms SA71 SA46 SA13

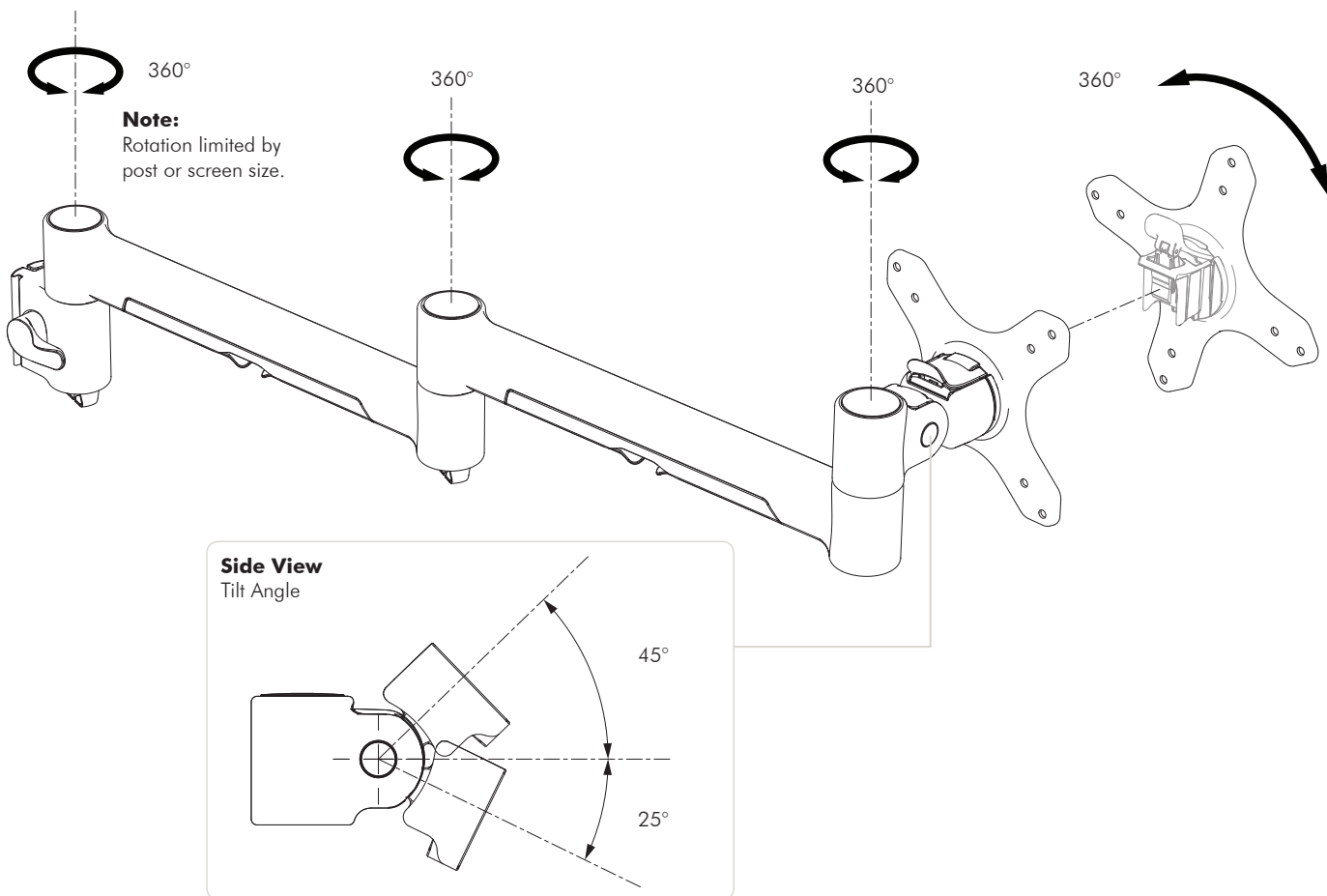
Monitor Spring Arm SS

Posts SP75 SP40 SP10

Wall Channels SW6 SW35

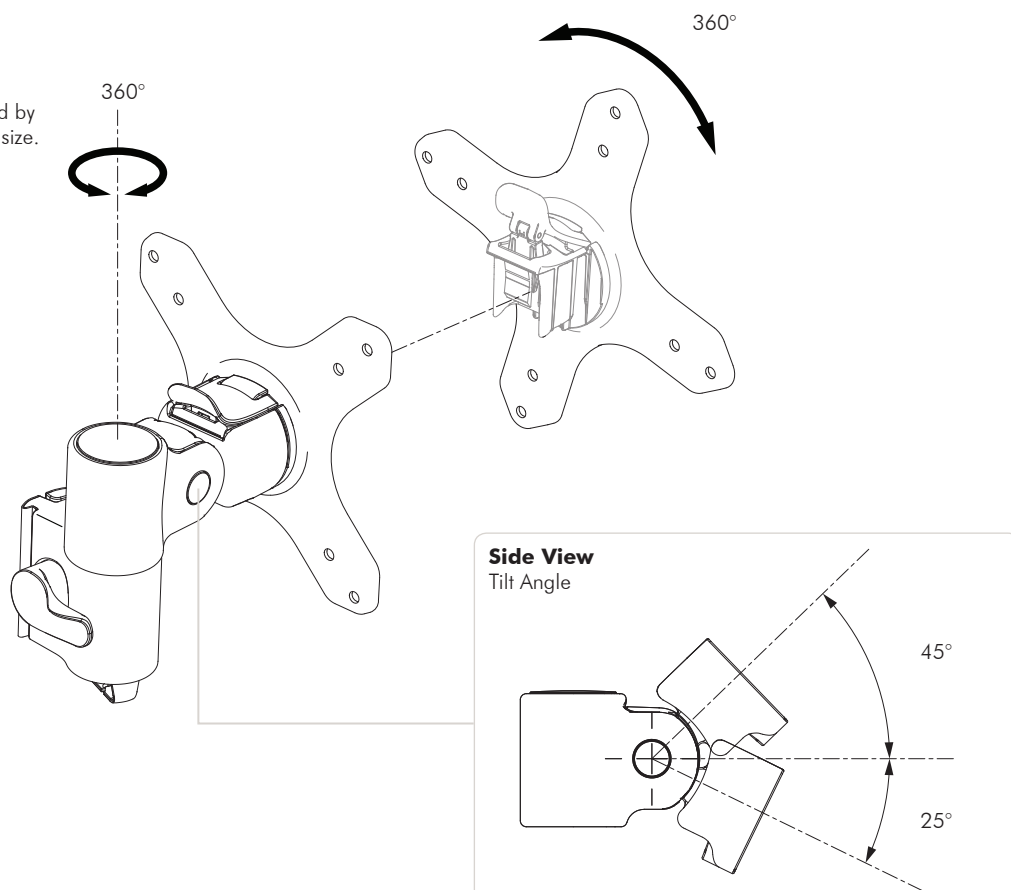
Mounting Head SMH

SA71 & SA46



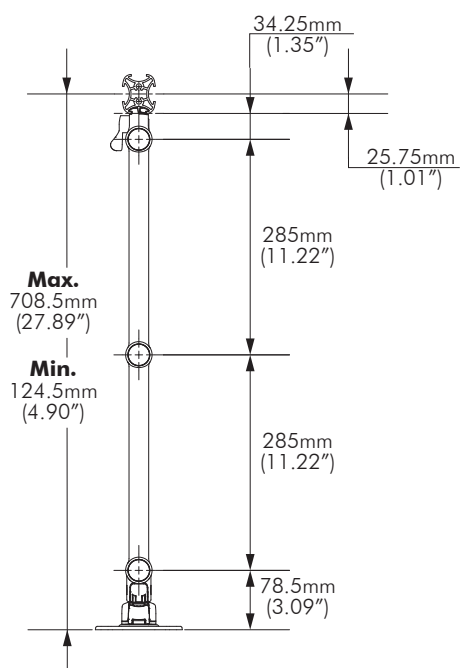
SA13

Note:
Rotation limited by post or screen size.

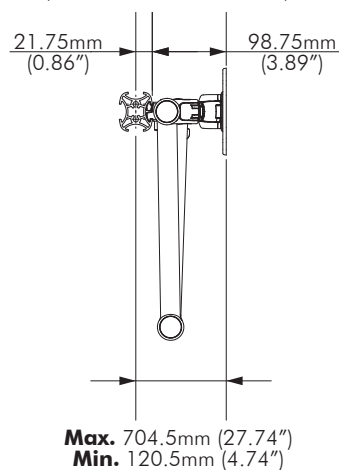


SA71

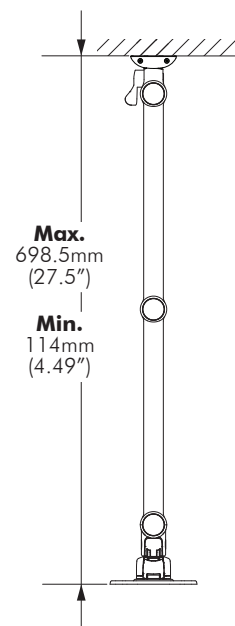
Front Attachment
(Maximum Extension shown)



Side Attachment
(Minimum Extension shown)

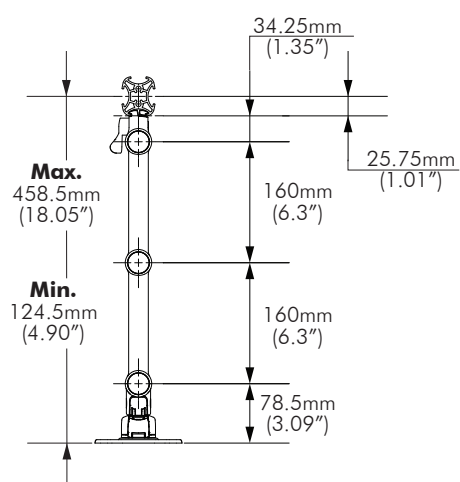


Wall Channel
(Maximum Extension shown)

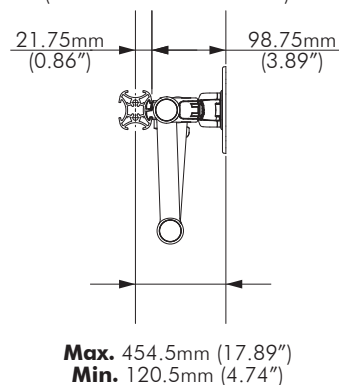


SA46

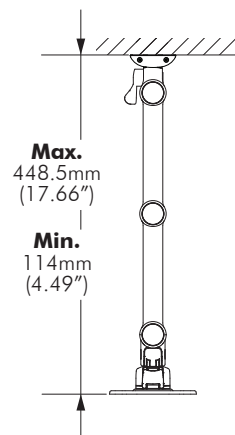
Front Attachment
(Maximum Extension shown)



Side Attachment
(Minimum Extension shown)

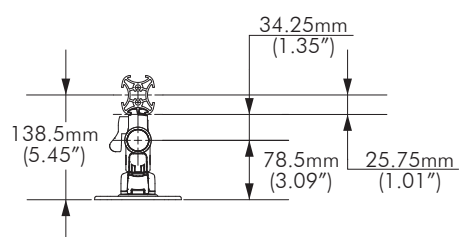


Wall Channel
(Maximum Extension shown)

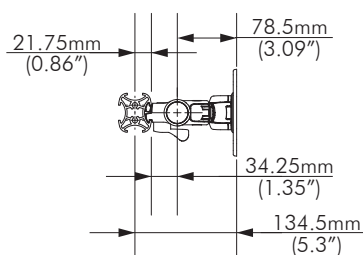


SA13

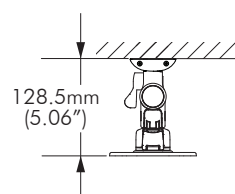
Front Attachment

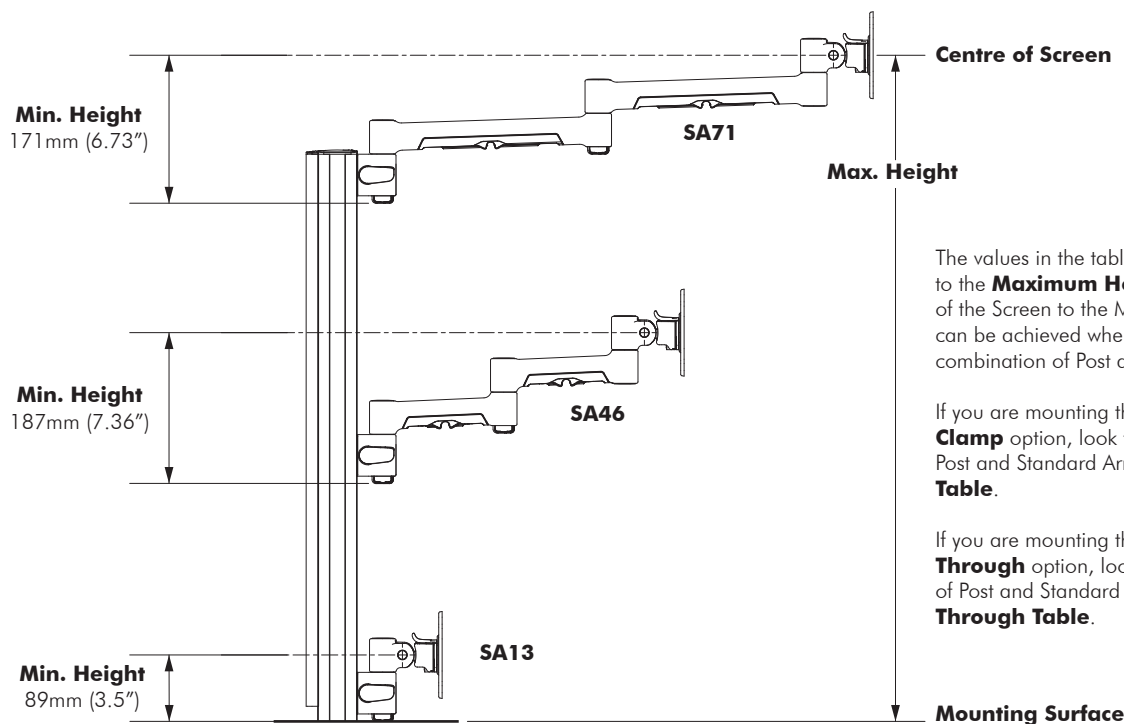


Side Attachment



Wall Channel





The values in the tables below correspond to the **Maximum Height**, from the Centre of the Screen to the Mounting surface, that can be achieved when using a particular combination of Post and Standard Arm.

If you are mounting the post using the **Desk Clamp** option, look for your combination of Post and Standard Arm in the **Desk Clamp Table**.

If you are mounting the post using the **Bolt Through** option, look for your combination of Post and Standard Arm in the **Bolt Through Table**.

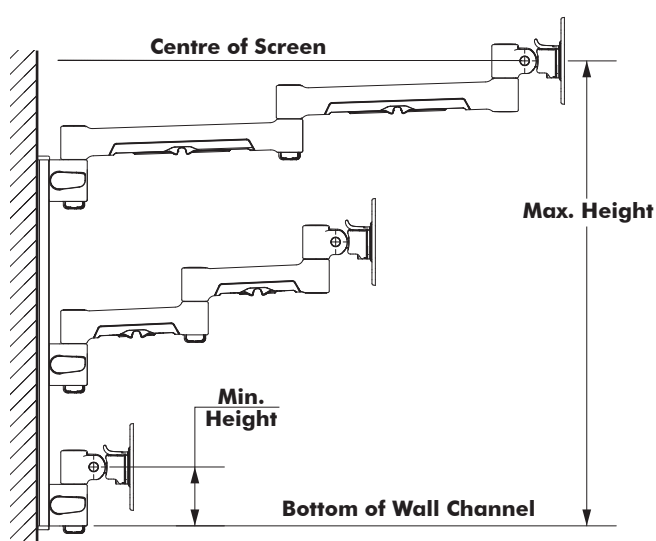
Desk Clamp
Max Height

		Posts		
		SP75	SP40	SP10
Monitor Arms	SA71	860mm (33.85")	512mm (20.15")	212mm (8.34")
	SA46	879mm (34.6")	528mm (20.78")	230mm (9.05")
	SA13	781mm (30.75")	431mm (16.97")	131mm (5.16")

Bolt Through
Max Height

		Posts		
		SP75	SP40	SP10
Monitor Arms	SA71	860mm (33.85")	512mm (20.15")	212mm (8.34")
	SA46	876mm (34.48")	525mm (20.66")	226mm (8.89")
	SA13	776mm (30.55")	426mm (16.77")	126mm (4.96")

Monitor Arm | Height Adjustment on Wall Channels



The values in the tables to the right correspond to the **Maximum Height** and **Minimum Height**, from the Centre of the Screen to the bottom of the wall channel, that can be achieved when using a particular combination of Wall Channel and Monitor Arm.

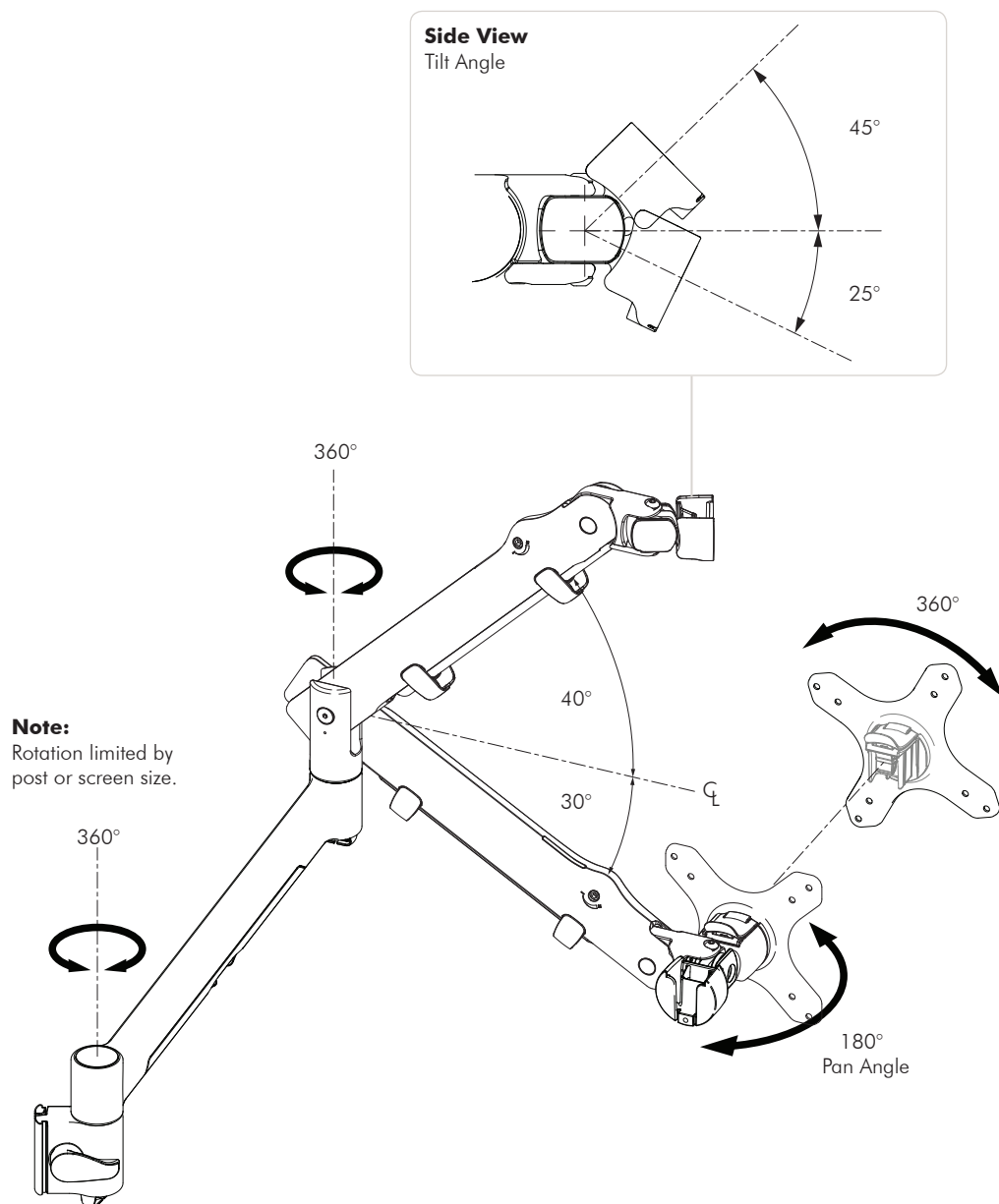
Maximum Height

		Wall Channel	
		SW6	SW35
Monitor Arms	SA71	168mm (6.61")	463mm (18.23")
	SA46	183mm (7.2")	478mm (18.82")
	SA13	83mm (3.27")	381mm (15")

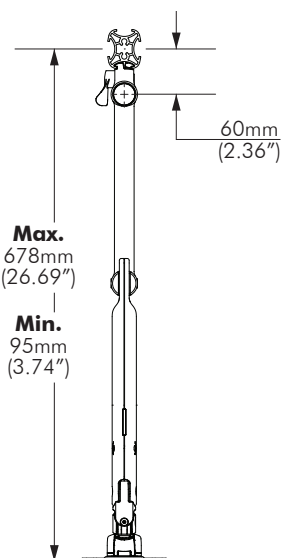
Minimum Height

		Wall Channel	
		SW6	SW35
Monitor Arms	SA71	163mm (6.41")	
	SA46	178mm (7")	
	SA13	78mm (3.07")	

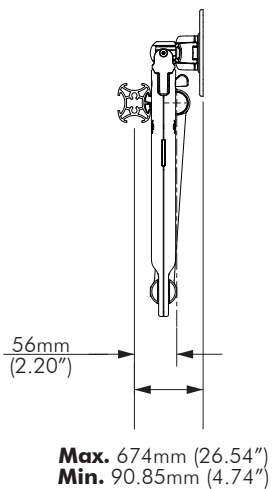
SS



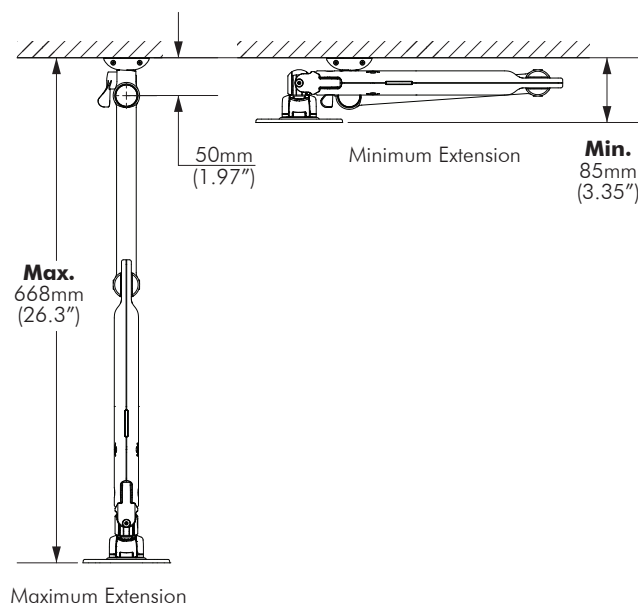
Front Attachment
(Maximum Extension shown)



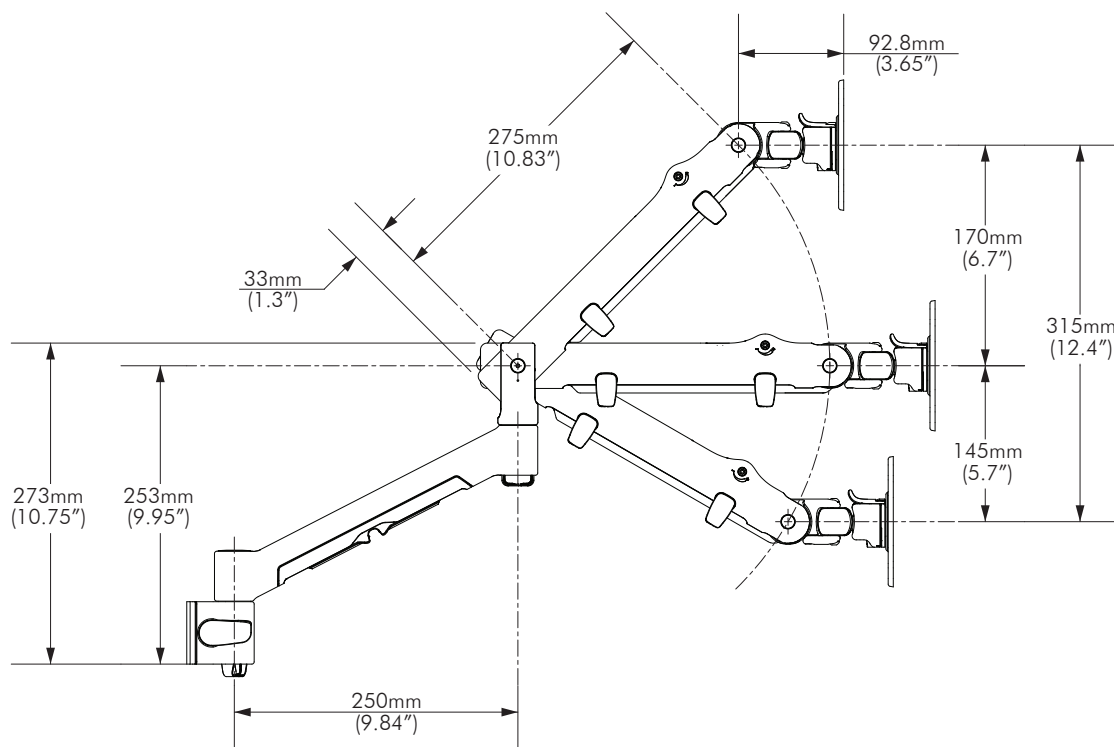
Side Attachment
(Minimum Extension shown)



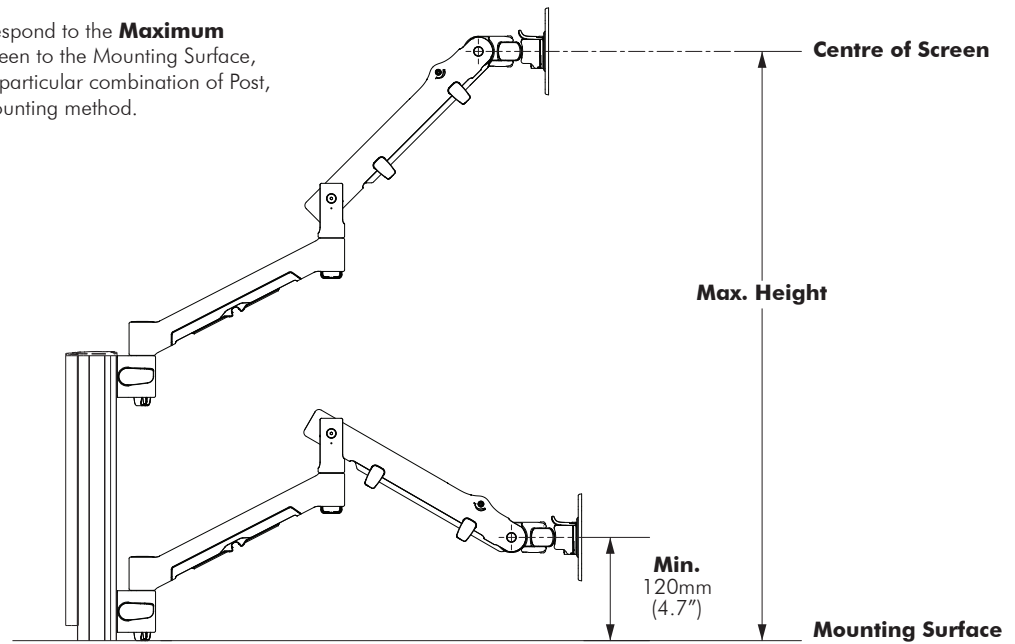
Wall Channel



Monitor Spring Arm | Range of movement - Arm Dimensions



The values in the tables below correspond to the **Maximum Height**, from the Centre of the Screen to the Mounting Surface, that can be achieved when using a particular combination of Post, Monitor Spring Arm and surface mounting method.



Desk Clamp Max Height

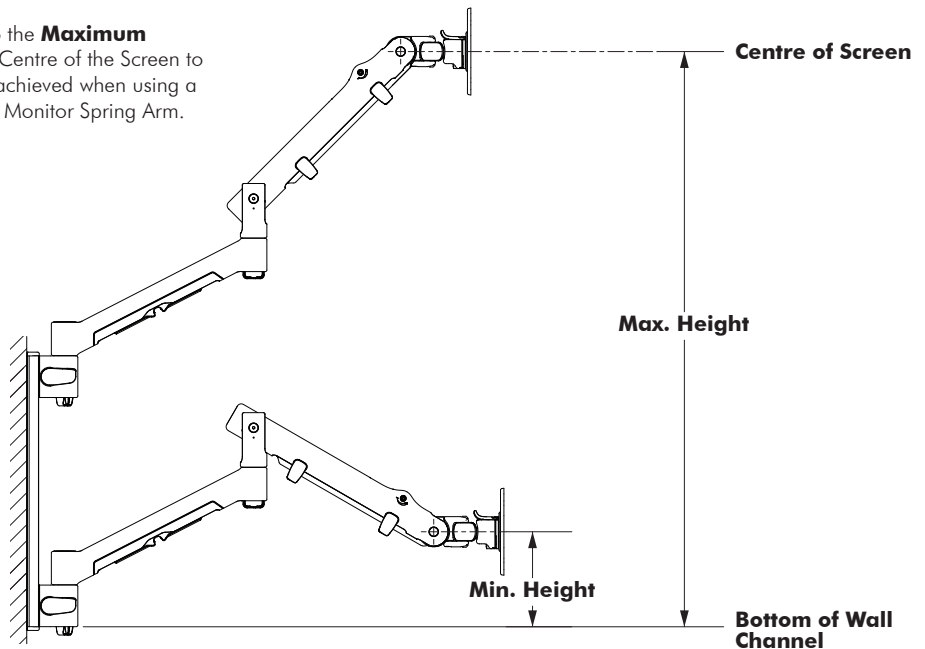
		Posts		
		SP75	SP40	SP10
Monitor Spring Arm	SS	1130mm (44.5")	780mm (30.7")	480mm (18.89")

Bolt Through Max Height

		Posts		
		SP75	SP40	SP10
Monitor Spring Arm	SS	1130mm (44.5")	775mm (30.51")	475mm (18.7")

Monitor Spring Arm | Height Adjustment on Wall Channels

The values in the tables below correspond to the **Maximum Height** and **Minimum Height**, from the Centre of the Screen to the bottom of the wall channel, that can be achieved when using a particular combination of Wall Channel and Monitor Spring Arm.



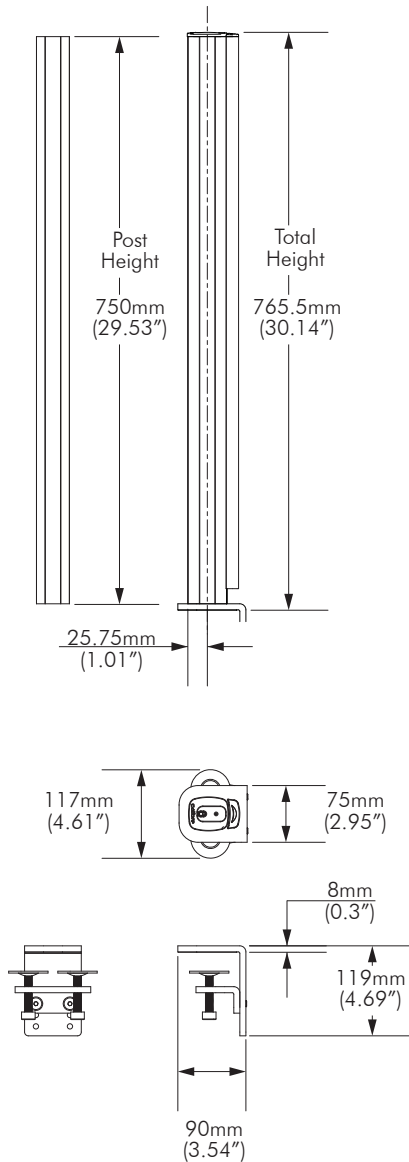
Minimum Height

		Wall Channels	
		SW6	SW35
Monitor Spring Arm	SS	112mm (4.4")	

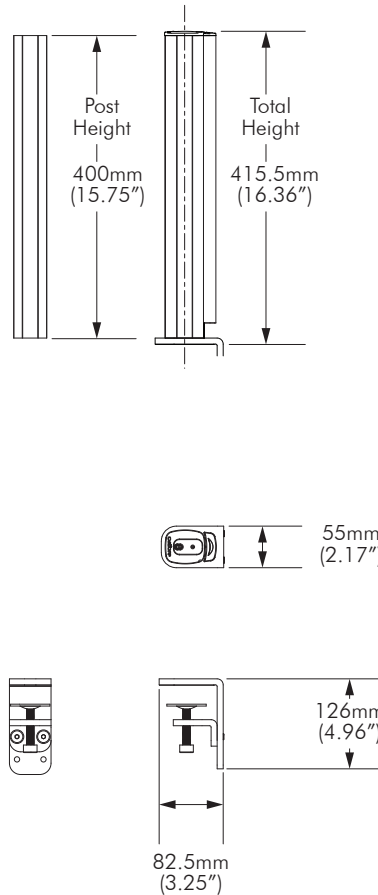
Maximum Height

		Wall Channels	
		SW6	SW35
Monitor Spring Arm	SS	427mm (16.8")	725mm (28.54")

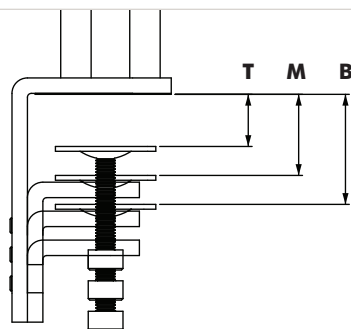
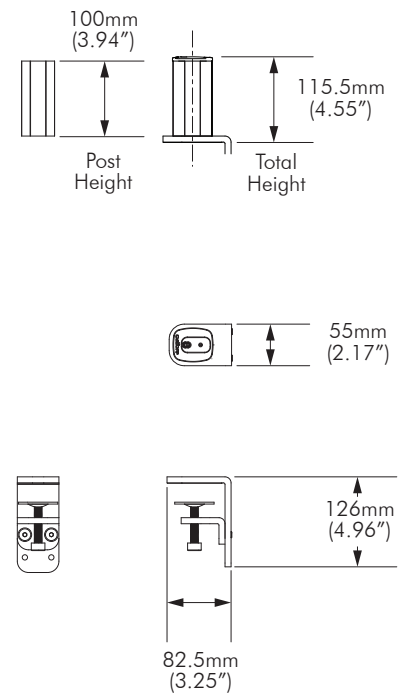
SP75



SP40



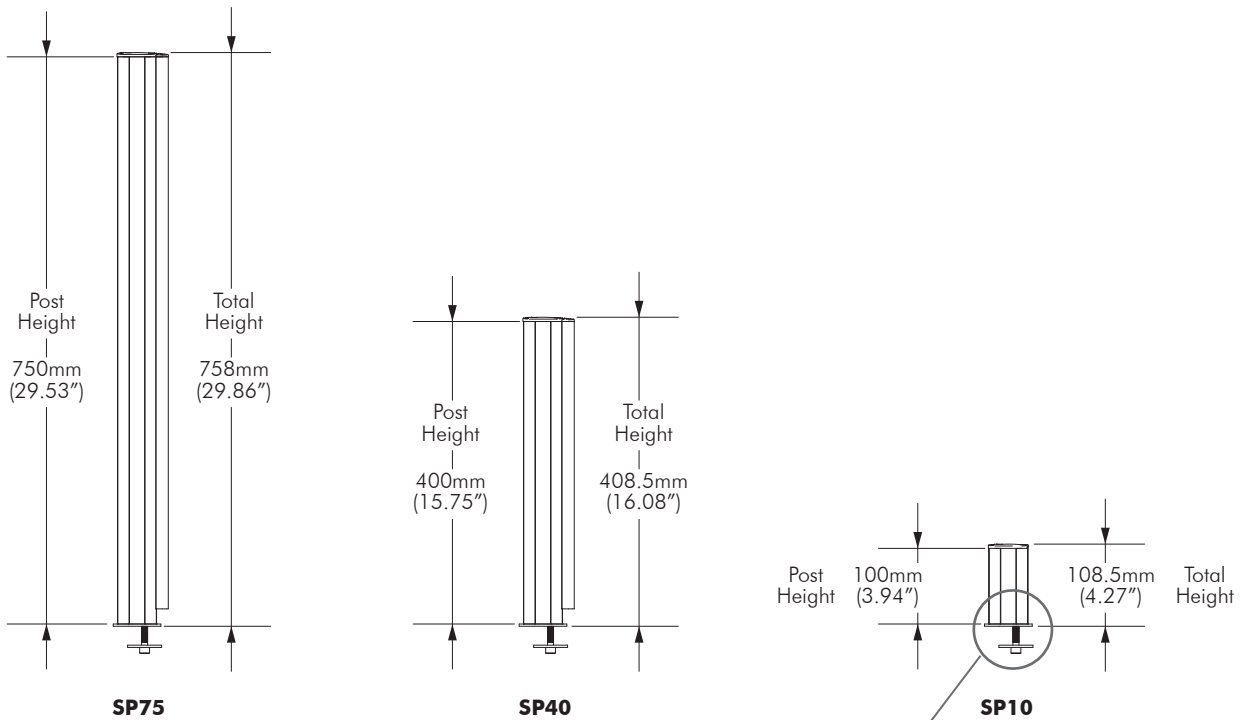
SP10



Top	0 - 38mm (default)
Middle	11 - 53mm
Bottom	25 - 68mm

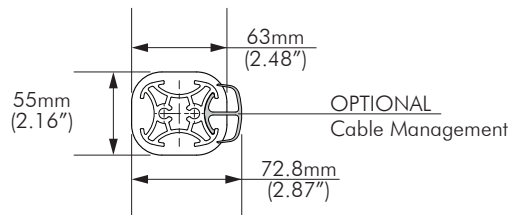
The Desk Clamp bracket can be repositioned to suit different mounting surface thicknesses. The maximum mounting surface thicknesses supported are listed below from the Top to Middle to Bottom Screw Holes.

Important! Any mounting surface must be capable of supporting the combined weight of all Systema products and attached screens/devices. If in doubt, contact your mounting surface supplier.

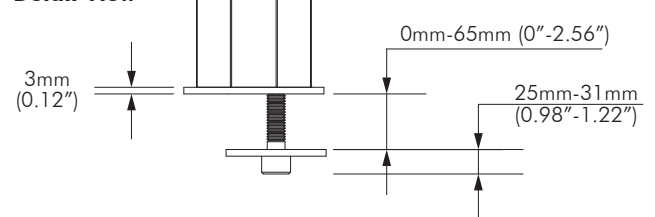


Top View

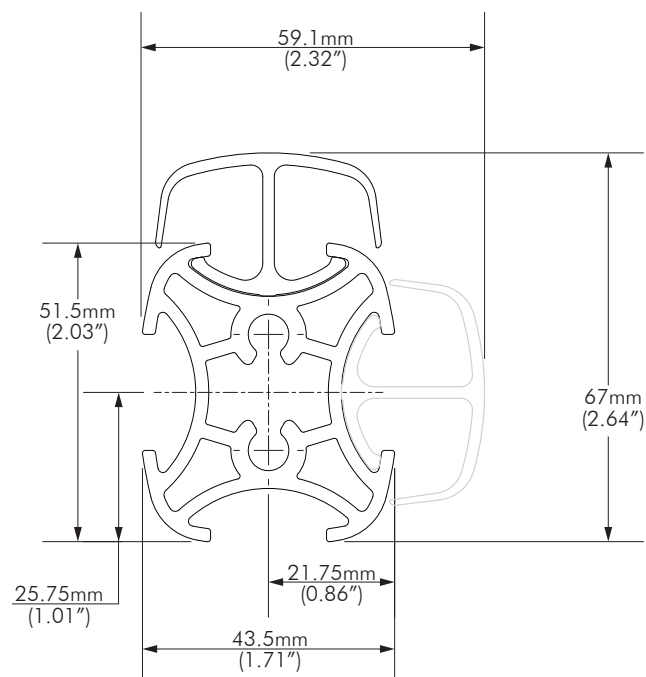
Bolt Through Desk Plate



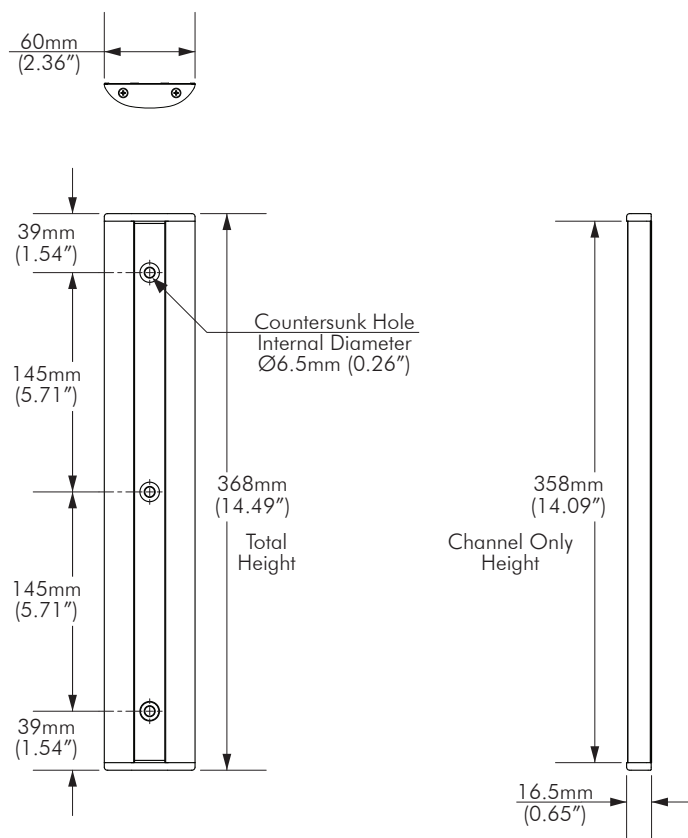
Detail View



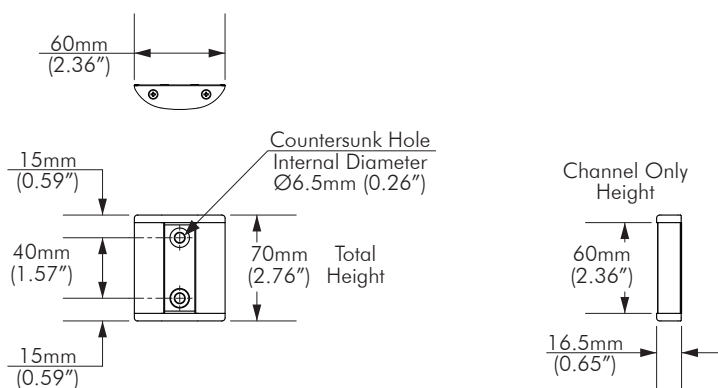
Posts | Post Cross Section - Dimensions



SW35



SW6



SMH

