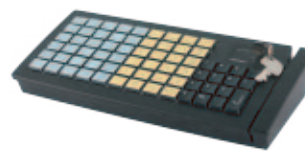


PROGRAMMABLE KEYBOARD



KB-6800 Series

- Powerful programming capability in 6 x 9 matrix structure
- KB-6800 : programming under DOS and Windows, multiple page, multiple level, whole range key content, time delay, position sense answer back code, etc.
- KB-6800U : programming under Windows, multiple page, whole range key content, time delay, position sense answer back code, etc.
- True spill-resistant design
- Optional blank key, double key for alternative key group layout
- Optional MSR (Magnetic Stripe Reader)
- WEPOS certified for KB-6800U
- 70 keys + 6 position control key
- Key top size: 18 x 22 mm for normal key
- Interface : PS/2 or USB
- Dimension : 340 mm (W) x 150 mm (D) x 58 mm (H), Weight : 1.05 kg
- Color : Ivory white or black

KB-6600 Series

- Powerful programming capability in 6 x 12 matrix structure
- KB-6600: programming under DOS, programming under Windows, multiple page, multiple level, whole range key content, time delay, position sense answer back code, etc.
- KB-6600U: programming under Windows, multiple page, whole range key content, time delay, position sense answer back code, etc.
- True spill-resistant design
- Optional blank key, double key for alternative key group layout
- Optional MSR (Magnetic Stripe Reader)
- WEPOS certified for KB-6600U
- 84 keys + 6 position control key
- Key top size : 19 x 19 mm for normal key
- Interface : PS/2 or USB
- Dimension : 340 mm (W) x 150 mm (D) x 58 mm (H), Weight : 1.09 kg
- Color : Ivory white or black

KB-4000

- A highly versatile device that composed of several security units of 4 x 10 matrix structure
- Software program for non-English (European) language
- OS support: DOS / Win98 / NT / 2000 / XP Pro
- Optional MSR and smart card reader
- Interface : USB
- Dimension: 210 mm (W) x 138 mm (D) x 56 mm (H), Weight : 0.87 kg
- Color : Ivory white or black

SP-1200

- ITO resistive touch pad over 3.8" FSTN LCD
- Adjustable LCD backlight contrast
- Display area 3" (H) x 2.3" (V) with resolution 320 x 240
- Touch resolution: 500 dpi
- Tethered non-electronic stylus
- Low power consumption: 70 mA @ 5V DC in USB interface
- Smooth bitmap provided and resolution required for signature verification
- Simultaneous view of electronic signature on LCD pad (Simulating familiar pen and paper experience) and monitor (For visual comparison with original card signature)
- Interface : USB
- Dimension : 150 mm (W) x 122 mm (D) x 26 mm (H), Weight : 0.37 kg

BAR CODE SCANNER



CD-3860

- 1D long-range handheld CCD scanner
- CCD scanner with large trigger for handy operation
- Most 1D barcodes decoding support including GS1 DataBar
- Depth of Field : 0 – 300 mm
- Scan rate : 330 scans per second for single-line scanning
- Adjustable stand for hand-free scan
- Dimension : 152 mm x 64 mm x 105 mm, weight : 120 g, drop resistance 1.5 meter
- Interface support : Serial or USB



CD-4860

- 2D handheld image CCD scanner
- Avant-garde design with transparent top cover
- Most 1D and 2D barcode decoding support
- Depth of Field : 0 - 440 mm
- Scan rate : 200 scans per second for single-line scanning
- Scan rate : 56 images per second
- Adjustable stand for hand-free scan
- Dimension : 187 mm x 82 mm x 64 mm, weight : 150 g, drop resistance 1 meter
- Interface support : Serial or USB



MK-5145

- 1D entry-level laser scanner
- Wider scanning field than a typical CCD
- Depth of Field : 0 - 140 mm
- Scan rate: 72 scan per second for single-line scanning
- Editable custom bar code data
- Easy to program using Windows-based utility or bar code menus
- Dimension : 187 mm x 82 mm x 64 mm, weight : 97 g, drop resistance 1.5 meter
- Interface support : Serial, USB or PS/2



LS-1000

- 1D Omnidirectional laser scanner with a detachable cradle
- Button switching for omnidirectional and single-line scanning, ideal for increasing operating efficiency
- Depth of Field : 0 – 200 mm
- Scan rate : 1400 scans per second for omnidirectional scanning
- Scan rate : 74 scans per second for single-line scanning
- Powerful 20-line scan pattern yields
- With the proprietary real-time decoding technology to ensure instant recognition and decoding
- Stand alone or mounted solution
- Dimension : 111 x 66 x 70, Weight : 200 g, drop resistance 1.5 meter
- Interface support : USB

CASH DRAWER



CR-6300 Series

- Heavy-duty cash drawer with innovative "Screwless" design
- Reinforced steel with anti-scratch surface in a modern style
- Large ball bearings design for remarkable smooth drawer slide
- Precision mechanical parts with tight tolerance for drawer to assure wobble-free movement
- Check slot underneath cash tray for large-denomination notes or important papers
- Complete mechanical and lock design for maximum security
- 5 or 6 fixed coin compartments
- 5 fixed bill compartment with metal bill clip
- Optional additional removable tray and optional tray cover with lock
- WEPOS ready
- Interface:
 - CR-6310B-A : Printer driven
 - CR-6314B-A : Dedicated Serial
 - CR-6315B-A : USB
 - CR-6325B-A : Powered USB
- Dimension : 426 mm (W) x 456 mm (D) x 100 mm (H), Weight : 8.8 kg



CR-4000 Series / 4100 Series

- Medium cash drawer with innovative "Screwless" design in a modern style
- Equipped with plastic bill clip (CR-4000), with metal bill clip (CR-4100)
- Advanced design to extend the MTBF to 1,000,000 times
- Precision mechanism to assure wobble-free drawer movements
- Only adjustable bill compartment on CR-4000 series for specific requests
- Check slot underneath cash tray for large-denomination notes or important papers
- Complete mechanical and lock design for maximum security
- Open-drawer indicator output (except CR-4X03 / 4)
- Intelligent interface models providing transaction security : 255 codes defined by control board switch (CR-4X02 / 3)
- Multiple input / output expansion connectors on intelligent interface models for cascade application
- Smart interface models can transform to each other through switch and cable changes only
- CR-4100 series : Bill compartments are fixed. Bill weight is made of heavy metal material
- CR-4x05 : WEPOS ready
- Interface:
 - CR-4000/4100 : Printer driven
 - CR-4001/02/03 (CR-4101/02/03): Smart cash drawer, Dedicated Serial / Non-Dedicated Serial / Parallel
 - CR-4004/4104 : Dedicated Serial
 - CR-4005/4105 : USB
 - CR-4015/4115 : Powered USB
- Dimension : 428 mm (W) x 460 mm (D) x 100mm (H), Weight : 6 kg
- Color : Ivory white or black



CR-3100 Series

- Compact cash drawer with innovative "Screwless" design in a modern style
- Adjustable bill and coin compartments on CR-3100
- Advanced design to extend the MTBF to 1,000,000 times
- Precision mechanism to assure wobble-free drawer movements
- Check slot underneath cash tray for large-denomination notes or important papers
- Complete mechanical and lock design for maximum security
- Open-drawer indicator output (except CR-3103 / 4)
- Intelligent interface models provide transaction security. 255 codes defined by control board switch (CR-3102 / 3)
- Multiple Input / Output expansion connectors on intelligent interface models for cascade application
- Smart interface models can transform to each other through switch and cable changes only
- Interface:
 - CR-3100/3100B/3100-US : Printer driven
 - CR-3104 : Dedicated Serial
 - CR-3115 : Powered USB
- Dimension : 400 mm (W) x 410 mm (D) x 85 mm (H), Weight : 6.7 kg
- Color : Ivory white or black



CR-2200 Series

- Flip-top cash drawer with detailed powder coating
- Contemporary style and flat side surface
- Rugged design with no screw outside to be accessed
- Aluminum die cast top and bottom
- Complete mechanical and lock design for maximum security
- Check slot underneath cash tray for large-denomination notes or important papers
- 2 fixed and 4 adjustable (total 6) bill compartments
- 1 fixed and 7 adjustable (total 8) coin compartments. Partially adjustable in size and number of coin compartment separator
- Optional additional removable tray and tray cover with lock
- WEPOS certified
- Interface:
 - CR-2210B : Printer driven
 - CR-2214B : Dedicated Serial
 - CR-2215B : USB
 - CR-2225B : Powered USB
- Dimension : 460 mm (W) x 175 mm (D) x 102 mm (H), Weight : 4.3 kg
- Color : Ivory white or black

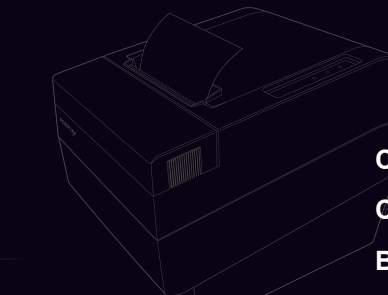


POSIFLEX

MULTIFUNCTIONAL POS PERIPHERALS



Posiflex Technology, Inc. www.posiflex.com



Customer Pole Display
Cash Drawer
Bar Code Scanner
Programmable Keyboard
Magnetic Stripe Reader
Monitor
POS Printer

MONITOR



TM-8115 / LM-8115

- High quality 15" TFT LCD touch panel with no wobbling even when pressing the corners (TM-8115)
- LCD resolution up to 1024 x 768
- Resistive or IR touch panel in USB interface (TM-8115) / Non-touch LCD (LM-8115)
- Easy tilt angle adjustment from 18° to 75°
- Touch beep can be pitch adjusted / enabled / disabled by software control (TM-8115)
- 2 USB-port support
- Optional side mounted kits such as magnetic stripe card reader SD-400Z, SD-600W, SD-700, SD-710 or programmable keypad KP-300W
- Optional VESA mounting kit WB-6000V-B for versatile applications



TM-7117

- High quality 17" TFT LCD touch panel with no wobbling even when pressing the corners
- LCD resolution up to 1280 x 1024
- Resistive touch panel in USB or RS232 interface
- Easy tilt angle adjustment from 15° to 70° vertically
- Touch beep can be pitch adjusted / enabled / disabled by software control
- 2 USB-port support
- Optional side mounted kits such as magnetic stripe card reader SD-400Z, SD-600W, SD-700, SD-710 or programmable keypad KP-300W
- Optional VESA mounting kit WB-6000V-B for versatile applications



TM-7112 / LM-7112

- High quality 12.1" TFT LCD touch panel with no wobbling even when pressing the corners (TM-7112)
- LCD resolution up to 1024 x 768
- Resistive touch panel in USB or RS232 interface (TM-7112) / Non-touch LCD (LM-7112)
- Up to 35 million touches in one point
- Easy tilt angle adjustment from 42.5° to 77.5°
- Touch beep can be pitch adjusted / enabled / disabled by software control
- 2 USB-port support
- Optional side mounted kits such magnetic stripe card reader SD-300 or side mount programmable keypad KP-200
- Color : Ivory white or black

MONITOR



LM-6112

- High quality 12.1" TFT LCD
- LCD resolution up to 1024 x 768
- Easy tilt angle adjustment
- Optional VESA mounting kit for versatile applications
- Application covering POS, Kiosk, factory automation, etc.
- Color : Ivory white or black



LM-2210

- High quality 10.4" TFT LCD
- LCD resolution up to 800 x 600
- Easy tilt angle adjustment
- Optional VESA mounting kit for versatile applications
- Application covering POS, Kiosk, factory automation, etc.



TM-2008 / LM-2008

- High quality 8" TFT LCD touch panel with no wobbling even when pressing the corner (TM-2008)
- LCD resolution up to 800 x 600
- Resistive touch panel in USB interface / Non-touch LCD (LM-2008)
- Easy tilt angle adjustment from 20° to 90°
- Color : Ivory white or black



TM-8045 / LM-8045

- The 2nd display 15" LCD for Jiva and KS series
- LCD resolution up to 1024 x 768
- Resistive or IR touch panel in USB interface (TM-8045) / Non-touch LCD (LM-8045)
- Easy tilt angle and swivel adjustment
- Stand height at 30 or 60 cm
- Application covering POS, Kiosk, factory automation, etc.



LM-8015

- The 2nd display 15" LCD for Jiva and KS series
- LCD resolution up to 1024 x 768
- Easy tilt angle and swivel adjustment
- Stand height at 30 or 60 cm
- Application covering POS, Kiosk, factory automation, etc.



LM-6801

- The 2nd display 12.1" LCD for Posiflex Jiva and KS series
- For Posiflex terminals with generation 6 super slim base stand
- LCD resolution up to 1024 x 768
- Easy tilt and swivel adjustment
- Application covering POS, Kiosk, factory automation, etc.



LM-6101

- The 2nd display 12.1" LCD with dual backlight for Posiflex Jiva and KS series
- LCD resolution up to 1024 x 768
- Easy tilt and swivel adjustment
- Connection to host through VGA port
- Optional VESA mounting kit for versatile applications



LM-2010

- The 2nd display 10.4" LCD for Posiflex HT series
- LCD resolution up to 800 x 600
- Easy tilt angle adjustment
- Color : Ivory white or black

MAGNETIC STRIPE READER



MR-2100 Series / MR-2200

- Magnetic head
- MR-2100: ISO magnetic head ; MR-2100-JIS2: JIS II magnetic head ; MR-2200: ISO double magnetic heads in two sides
- Readable track
- MR-2100: ISO track 1, 2, 3 ; MR-2100-JIS2: JIS track I & II ; MR-2200: ISO track 1, 2, 3
- User-friendly bi-directional swipe
- Firmly heavy duty die-casting case
- Interface : USB, RS-232, and PS/2 (MR-2100 / MR-2200)
- Dimensions : 145 mm (L) x 46 mm (W) x 34 mm (H), Weight : 0.49 kg
- Color : Ivory white or black

POS PRINTER



AURA-9000

- 3" advanced high-speed thermal printer with auto and additional manual cutters
- Detailed curvy surface in a stylish design
- Spill-resistant and dust-resistant design
- Printing up to 300 mm per second in low-noise operation
- High-resolution printing up to 8 dots / mm and 640 dots / line
- 83, 80 or 58 mm paper width support
- QR code and PDF417 printing support
- User-friendly WiFi support without cable for easy setup
- USB virtual COM port to support COM port driver for well compatibility
- Desktop or wall-mount solution for flexible deployment
- Drop-and-load structure for easy paper loading
- "Hood Release Button" for paper jam
- Control over 2 cash drawers through 1 port
- Enhanced capability with kitchen bell for reminder function
- Interface : USB + Optional Serial, Parallel, LAN or Wireless
- Dimension : 148 (W) mm x 205 (D) mm x 143 (H) mm, Weight : 1.2 kg
- Color : Ivory white or black



AURA-8000

- 3" high-speed thermal printer with auto and additional manual cutters
- Detailed curvy surface in a stylish design
- External cover for spill-resistant design (Optional)
- Printing speed up to 220 mm per second in low-noise printing
- High-resolution print up to 8 dots / mm and 576 dots / line
- 80 or 58 mm paper width support
- QR code and PDF417 printing support
- Desktop or wall-mount solution for flexible deployment
- Drop-and-load structure for easy paper loading
- Control over 2 cash drawers through 1 port
- Enhanced capability in kitchen bell for reminder function
- Interface : Serial, Parallel, LAN or USB (USB virtual COM port)
- Dimension : 148 (W) mm x 205 (D) mm x 143 (H) mm, Weight : 1.2 kg
- Color : Ivory white or black



AURA-6800

- 3" thermal printer with auto and additional manual cutters
- Detailed streamlined design
- Printing speed up to 150 mm per second
- High-resolution print up to 8 dots / mm and 576 dots / line
- 80 or 58 mm paper width support
- QR code and PDF417 printing support
- User-friendly WiFi support without cable for easy setup
- Desktop or wall-mount solution for flexible deployment
- Drop-and-load structure for paper roll loading
- "Hood Release Button" for paper jam
- Control over 2 cash drawers through 1 port
- Enhanced capability in kitchen bell for reminder function
- Interface : Serial + Optional USB (USB virtual COM port), Parallel, LAN or Wireless
- Dimension : 150 (W) mm x 187 (D) mm x 140 (H) mm, Weight : 0.95 kg
- Color : Ivory white or black



AURA-5200E

- 2" high-speed thermal printer with auto and additional cutters
- Printing speed up to 220 mm per second
- High-resolution print : 8 dots / mm and 432 dots / line
- QR code and PDF 417 printing support
- Auto cutter with additional manual cutter
- Desktop or wall-mount solution for flexible deployment
- Drop-and-load structure for easy paper loading
- Control over 2 cash drawers through 1 port
- Reliable performance and structure
- Enhanced capability with kitchen bell for reminder function
- Interface : USB or Serial
- Dimension : 120 (W) mm x 203 (D) mm x 124 (H) mm, Weight : 1.15 kg
- Color : Ivory white or black

CUSTOMER POLE DISPLAY



PD-7600 Series

- Graphic STN LCD (Liquid Crystal Display) in blue background with white backlight
- Four-line display with 30 Arabic letters or 15 Chinese characters per line
- 240 x 64 dots for graphic display
- Adequate character size per digit for easy viewing : 8.47 x 4.24 mm
- Front display contrast adjustment buttons
- 15°, 30° and 45° adjustable view angles vertically
- Rotated display frame 270° horizontally
- ESC / POS command support
- MODELS, LANGUAGES & CODE TABLES
- PD-7610: Simplified Chinese, GB-2312
- PD-7620: Traditional Chinese, BIG-5
- PD-7630: Arabic, Windows code page 01256 (with Arabic numerals addressed in <80> ~ <89> of code page 1)
- Interface : Serial
- Dimension : 221 mm (W) x 110 mm (D) x 431 / 200 (H) mm, Weight : 0.92 kg (Standalone type)
- Color : Ivory white or black



PD-320 Series

PD-2800 Series

PD-2800 Series / PD-320 Series

- Adjustable pole height
- PD-2800 series : Highly bright VFD (Vacuum Fluorescent Display) with green or blue filter
- Two-line display with 20 characters per line
- PD-320 series : LCD display with blue character with yellow background
- Two-line display with 20 characters per line
- Adequate character size : 9.03 x 5.25 mm (PD-2800 series), 6.0 x 9.6 mm (PD-320 series)
- 15° and 23° adjustable view angles vertically
- Rotated display frame almost 360° horizontally
- Brightness adjustment by software (PD-2800 series)
- Various command emulation modes selection by DIP switch
- Command emulation modes : PST, EPSON (PD-320 series)
- Command emulation modes : ADM, Aedex, Epson, Futaba, Noritake, UTC (PD-2800 series)
- Specific character sets support (PD-320 series)
- 12 international character sets support (PD-2800 series)
- Euro dollar sign support in USA and European fonts
- Interface : USB (USB virtual COM port) (USB with Serial emulation without modifying the software)
- Dimension : 199 mm (W) x 120 mm (D) x 265 ~ 395 mm (H), Weight : 0.48 kg
- Color : Ivory white or black



PD-2600 Series

- Highly bright VFD with green or blue filter
- Two-line display with 20 characters per line
- Adequate character size per digit for easy viewing : 9.03 x 5.25 mm
- 15°, 30° and 45° adjustable view angles vertically
- Rotated display frame 270° horizontally
- Various command emulation modes selection by DIP switch
- Command emulation modes : ADM, Aedex, Epson, Futaba, Noritake, UTC
- 12 international character sets support
- Euro dollar sign support in USA and European fonts
- Interface : Serial or USB
- Dimension : 222 mm (W) x 112 mm (D) x 410 mm (H), Weight : 0.84 kg (Standalone type)
- Color : Ivory white or black



PD-2300 Series

- Adjustable pole height
- Highly bright VFD with green or blue filter
- Two-line display with 20 characters per line
- Adequate character size per digit for easy viewing : 9.03 x 5.25 mm
- 15° and 30° adjustable view angles vertically
- Rotated display frame 360° horizontally
- Various command emulation modes selection by DIP switch
- Command emulation modes : ADM, Aedex, Epson, Futaba, Noritake, UTC
- 12 international character sets support
- Euro dollar sign support in USA and European fonts
- Brightness adjustment by software
- Power supply source from adaptor or printer
- Interface : Serial or USB
- Dimension : 260 mm (W) x 110 mm (D) x 291 ~ 426 mm (H), Weight : 0.93 kg
- Color : Ivory white or black



PD-300 Series

- LCD display with blue character and yellow green background
- Two-line display with 20 characters per line
- Character size per digit : 6.0 x 9.66 mm
- 15°, 30° and 45° adjustable view angles vertically
- Rotated display frame 270° horizontally
- Euro dollar sign support in USA and European fonts
- Specific character sets support
- Command emulation modes : EPSON, PST
- Interface : Serial or USB
- Dimension : 222 mm (W) x 112 mm (D) x 410 mm (H), Weight : 0.8 kg (Standalone type)
- Color : Ivory white or black