

Philips
LCD monitor with
PowerSensor

B Line

24 (23.8" / 60.5 cm diag.)
1920 x 1080 (Full HD)

242B1



Clear vision to get more done

Get your best work done with this Philips monitor. IPS screen with crisp FHD gives the clarity to see your work. Loaded with features to improve productivity and sustainability. Eye comfort features with TUV certified to reduce eye fatigue.

Designed for sustainability

- Designed to meet environmental standards
- PowerSensor saves up to 70% energy costs
- LightSensor for the perfect brightness with minimal power

Excellent performance

- IPS technology for full colors and wide viewing angles
- SmartImage presets for easy optimized image settings
- Effortlessly smooth action with Adaptive-Sync technology

Designed for the way you work

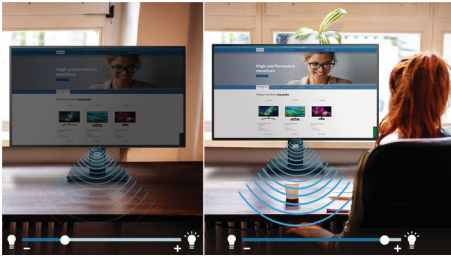
- TUV Eye Comfort certified to reduce eye fatigue
- Less eye fatigue with Flicker-free technology
- LowBlue Mode for easy on-the-eyes productivity
- EasyRead mode for a paper-like reading experience
- SmartErgoBase enables people-friendly ergonomic adjustments
- Built-in stereo speakers for multimedia



PHILIPS

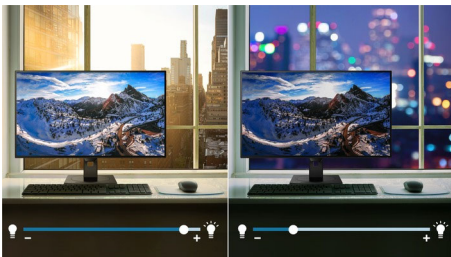
Highlights

PowerSensor



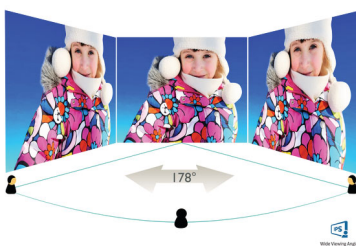
PowerSensor is a built-in 'people sensor' that transmits and receives harmless infrared signals to determine if user is present and automatically reduces monitor brightness when user steps away from the desk, cutting energy costs by up to 70 percent and prolonging monitor life.

LightSensor



LightSensor uses a smart sensor to adjust the picture brightness depending on the room light conditions for the perfect picture with minimal power usage.

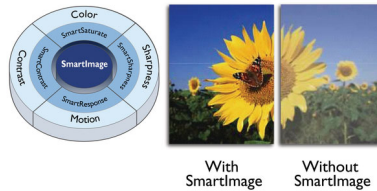
IPS technology



IPS displays use an advanced technology which gives you extra wide viewing angles of 178/178 degree, making it possible to view the display from almost any angle - even in 90 degree Pivot mode! Unlike standard TN panels, IPS displays gives you remarkably crisp images with vivid colors, making it ideal not only for Photos, movies and web browsing, but also for

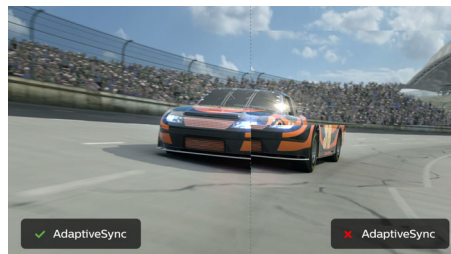
professional applications which demand color accuracy and consistent brightness at all times.

SmartImage



SmartImage is an exclusive leading edge Philips technology that analyzes the content displayed on your screen and gives you optimized display performance. This user friendly interface allows you to select various modes like Office, Photo, Movie, Game, Economy etc., to fit the application in use. Based on the selection, SmartImage dynamically optimizes the contrast, color saturation and sharpness of images and videos for ultimate display performance. The Economy mode option offers you major power savings. All in real time with the press of a single button!

Adaptive-Sync technology



Gaming shouldn't be a choice between choppy gameplay or broken frames. Get fluid, artifact-free performance at virtually any framerate with Adaptive-Sync technology, smooth quick refresh and ultra-fast response time.

TUV Rheinland Eye Comfort

Philips display meet TUV Rheinland Eye Comfort standard to prevent eye strain caused by prolonged computer use. With TUV Eye Comfort certification, Philips displays ensure flicker-free, low blue mode, no disturbing reflections, wide viewing angle and less reduction of image quality from different angles

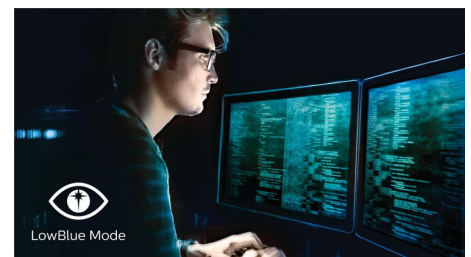
and ergonomic stand designs for ideal viewing experience. Keep your eyes healthy and boost work productivity.

Flicker-free technology



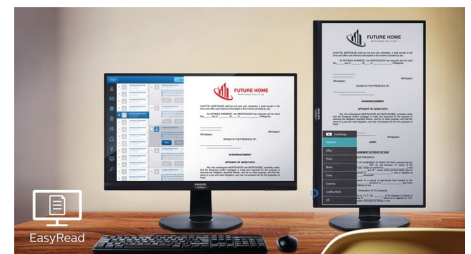
Due to the way brightness is controlled on LED-backlit screens, some users experience flicker on their screen which causes eye fatigue. Philips Flicker-free Technology applies a new solution to regulate brightness and reduce flicker for more comfortable viewing.

LowBlue Mode



Studies have shown that just as ultra-violet rays can cause eye damage, shortwave length blue light rays from LED displays can cause eye damage and affect vision over time. Developed for wellbeing, Philips LowBlue Mode setting uses a smart software technology to reduce harmful shortwave blue light.

EasyRead mode



EasyRead mode for a paper-like reading experience



Specifications

Picture/Display

- LCD panel type: IPS technology
- Backlight type: W-LED system
- Panel Size: 23.8 inch / 60.5 cm
- Display Screen Coating: Anti-Glare, 3H, Haze 25%
- Effective viewing area: 527.04 (H) x 296.46 (V)
- Aspect ratio: 16:9
- Maximum resolution: 1920 x 1080 @ 75Hz*
- Pixel Density: 93 PPI
- Response time (typical): 4 ms (Gray to Gray)*
- Brightness: 250 cd/m²
- Contrast ratio (typical): 1000:1
- SmartContrast: 50,000,000:1
- Pixel pitch: 0.2745 x 0.2745 mm
- Viewing angle: 178° (H) / 178° (V), @ C/R > 10
- Picture enhancement: SmartImage
- Color gamut (typical): NTSC 91%*, sRGB 107%*
- Display colors: 16.7M
- Scanning Frequency: 30 - 85 kHz (H) / 48 - 75 Hz (V)
- sRGB
- Flicker-free
- EasyRead
- LowBlue Mode
- Adaptive sync

Connectivity

- Signal Input: VGA (Analog), DVI-D (digital, HDCP), DisplayPort 1.2, HDMI 1.4 x 1
- HDCP: HDCP 1.4 (DVI/DP/HDMI)
- Sync Input: Separate Sync, Sync on Green
- USB: USB-B x 1 (upstream), USB 3.2 x 4 (downstream with 1 fast charge B.C 1.2)
- Audio (In/Out): PC audio-in, Headphone out

Convenience

- Built-in Speakers: 2 W x 2
- User convenience: SmartImage, Input, PowerSensor, Menu, Power On/Off
- Control software: SmartControl
- OSD Languages: Brazil Portuguese, Czech, Dutch, English, Finnish, French, German, Greek, Hungarian, Italian, Japanese, Korean, Polish, Portuguese, Russian, Simplified Chinese, Spanish, Swedish, Traditional Chinese, Turkish, Ukrainian
- Other convenience: Kensington lock, VESA mount (100x100mm)
- Plug & Play Compatibility: DDC/CI, Mac OS X, sRGB, Windows 10 / 8.1 / 8 / 7

Stand

- Height adjustment: 150 mm
- Pivot: +/- 90 degree

- Swivel: +/- 180 degree
- Tilt: -5 ~ 35 degree

Power

- ECO mode: 10.4 W (typ.)
- On mode: 14.5 W (typ.) (EnergyStar test method)
- Standby mode: 0.35 W
- Off mode: Zero watts with Zero switch
- Power LED indicator: Operation - White, Standby mode- White (blinking)
- Power supply: Built-in, 100-240VAC, 50-60Hz

Dimensions

- Product with stand(max height): 540 x 501 x 205 mm
- Product without stand (mm): 540 x 323 x 51 mm
- Packaging in mm (WxHxD): 600 x 465 x 198 mm

Weight

- Product with stand (kg): 4.57 kg
- Product without stand (kg): 2.99 kg
- Product with packaging (kg): 6.74 kg

Operating conditions

- Temperature range (operation): 0°C to 40°C °C
- Temperature range (storage): -20°C to 60°C °C
- Relative humidity: 20%-80 %
- Altitude: Operation: +12,000ft (3,658m), Non-operation: +40,000ft (12,192m)
- MTBF (demonstrated): 70,000 hrs (excluded backlight)

Sustainability

- Environmental and energy: PowerSensor, LightSensor, EnergyStar 8.0, EPEAT*, RoHS, TCO Certified Edge
- Recyclable packaging material: 100 %
- Post consumer recycled plastic: 85%
- Specific Substances: PVC / BFR free housing, Mercury free

Compliance and standards

- Regulatory Approvals: CB, EPA, FCC Class B, ICES-003, CE Mark, TUV Ergo, TUV/GS, SEMKO, CU-EAC, UKRAINIAN, TUV Eye Comfort certified, MEPS, RCM

Cabinet

- Front bezel: Black
- Rear cover: Black
- Foot: Black
- Finish: Texture



Issue date 2021-06-02

Version: 1.0.1

12 NC: 8670 001 76896
EAN: 87 12581 77768 5

© 2021 Koninklijke Philips N.V.
All Rights reserved.

Specifications are subject to change without notice.
Trademarks are the property of Koninklijke Philips N.V.
or their respective owners.

www.philips.com

* "IPS" word mark / trademark and related patents on technologies belong to their respective owners.
* The maximum resolution works for either HDMI input or DP input.
* Response time value equal to SmartResponse
* NTSC Area based on CIE1976
* sRGB Area based on CIE1931
* Fast charging complies with USB BC 1.2 standard
* EPEAT rating is valid only where Philips registers the product. Please visit <https://www.epeat.net/> for registration status in your country.
* The monitor may look different from feature images.